



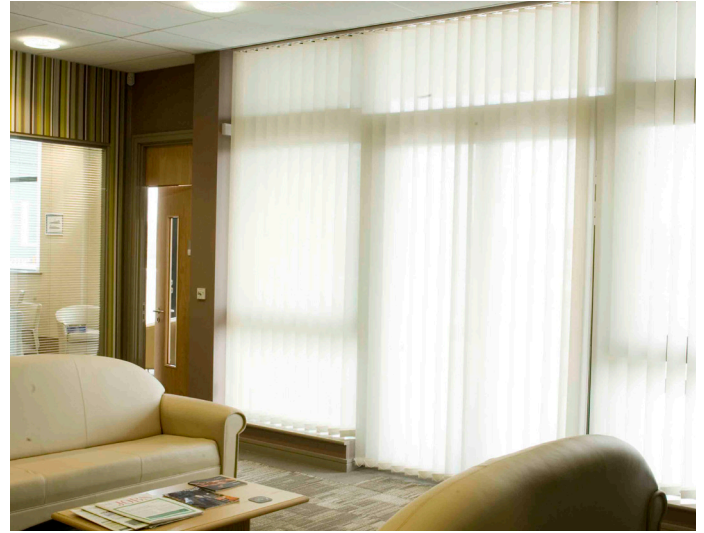
louva
SHADE



Louvashade II Wand

Vertical blind system

www.kensingtonsystems.co.uk



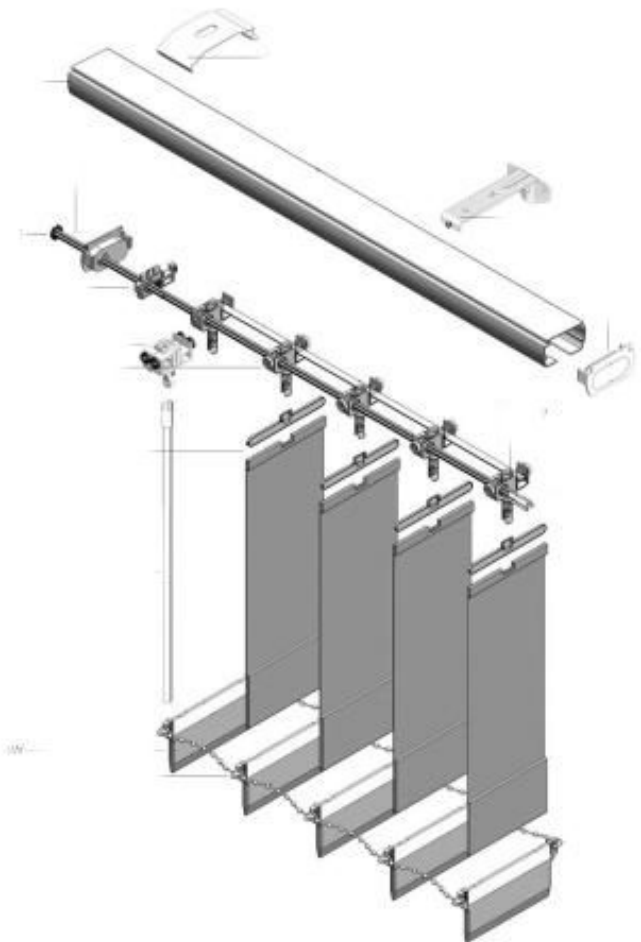
Sewn in weights options

This is a great alternative to adding value to your vertical blinds and also helps with child safety challenges. With sewn in weights (chainless) at the bottom of the vertical blind, there are no plastic chains to join the blinds together, allowing them to hang freely. They look fantastic and are very practical for little extra cost to your vertical blind.

Features

- No loose hanging cord or chains for safety – particularly children.
- Wand can be removed for cleaning.
- The wand controls both traversing of the louvres and tilt.
- Headrail system provides an equal louvre overlap for improved appearance.
- Flexible single and split draw options.
- Available in white headrail colour.

System schematic diagram



Standard specifications

Control Rod: Ø 8.1 mm aluminium alloy with a white powder paint finish.

Handle & connector: The Ø 20 mm x 77 mm long handle is barium sulphate filled polypropylene.

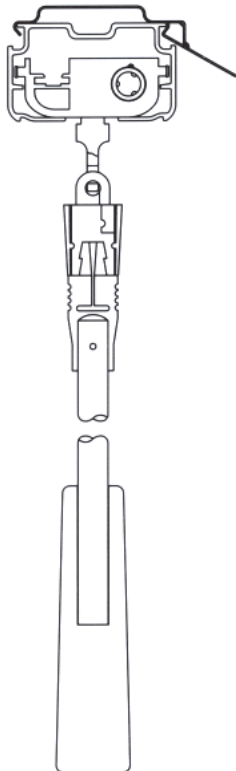
The Ø 11 mm x 35 mm long connector is acetal.

Wand gearbox & connectors: The gearbox is a traveller body 41 mm x 36 mm x 16 mm with a Ø 9 mm x 20 mm long hook.

The 56 mm x 49 mm x 1.6 mm connectors are acetal and provide a fixing hole for the gearbox and four variable length fittings for the traveller.

Size

- Headrail cross section is 45 mm x 26 mm
- Single draw blinds can be 4.5 mm wide maximum.
- Centre draw blinds can be 4.0 mm wide maximum.



General specification

The Kensington Louvashade Vertical Track System with Sewn in weights is the result of many years of research and technical development that has produced a product suitable for the contract healthcare blind market.

It has been designed for maximum performance and minimum maintenance, allowing consistent operation even with the rigours and occasional abuse in a commercial installation.

The Louvashade wand operated vertical blind system offer many product benefits.

Ease of operation makes it perfect for hospitals and schools.

Hold the wand and draw the louvres to the side, twist the wand and tilt the louvres to the desired position for perfect shading.

The elimination of sensitive components makes the wand operated Louvashade system even more user friendly.

Rigid self-aligning design of the travellers makes it almost impossible for the vanes to be knocked out of alignment, maintaining aesthetic appearance.

Aluminium track body provides maximum strength and minimal visual intrusion.

Wheeled louvre carriers provide low friction free operation

Minimum light gaps between louvre and headrail.